



S & B FILTERS, INC.
787 S. WANAMAKER AVE.
ONTARIO, CA 91761

OFFICE: 888.620.2233
FAX: 909.947.0603
WWW.SBFILTERS.COM



www.veraciousmotorsports.com

818C South Heald St.
Wilmington, DE 19801

p: 877.VMS.1320
f: 302.472.0604



THE TECHNOLOGY LEADER FOR PERFORMANCE FILTERS AND INTAKE KITS

PERFORMANCE CATALOG

AIR IN. POWER OUT.



www.veraciousmotorsports.com

818C South Heald St.
Wilmington, DE 19801

p: 877.VM5.1320
f: 302.472.0604

OCTOBER 2008

+ PROVIDING TECHNOLOGICAL ADVANCEMENTS FOR THE HIGH PERFORMANCE AIR FILTER MARKET FOR OVER 30 YEARS.

Over 30 years ago S&B Filters started with a simple mission – “to become a supplier of the most technically advanced high performance filter on the market.” Our commitment to the race community allowed us to develop products that featured the incredibly high efficiency ratings and tremendously low air flow restriction. We busted knuckles with the best engine builders of the day to deliver a product that supplied what they were craving – a filter that delivered performance advantages without sacrificing engine protection. We succeeded by keeping our production capabilities on the front-edge of technology, and never, ever, wavering from our goal of producing a high performance air filter that tests better than any other manufacturer. And even today we are pushing the other manufacturers to test to our standards. Exceptional design, leading-edge manufacturing and a commitment to thorough research and development has allowed us to make several advancements within the high performance category. Here are a few examples of our latest technological advancements:

- S&B Filters are designed and tested to meet the ISO 5011 Air Filtration Test Standard, the worldwide accepted benchmark for measuring the performance of filters and intake kits
- S&B Filters is first in the marketplace with its Build Your Own Filter program, making it possible for consumers and racers to select and build the filter best suited for their individual application
- S&B Filters tests its products to a higher standard in order to develop filters and intake kits that improve air flow, protect the engine and permit more horsepower
- With the consumer clearly in mind, S&B Filters has developed the Precision Cleaning & Oiling Kit, which enables the proper cleaning and oiling of S&B filters, thus ensuring a longer filter life and improving performance for the vehicle
- S&B Filters has expanded its scope of products to address the growing demand for diesel vehicles, with Performance Intake Kits for some of today's most popular engines and vehicles, including the Ford F-150 Powerstroke, Chevrolet Duramax and Dodge Cummins, improving both horsepower and torque as well as fuel economy and providing engine protection

S&B's High Performance Filters are proudly designed, engineered, and manufactured in the United States of America.



**The last air filter
you'll ever need
for your vehicle!**

Million Mile Limited Warranty

All S&B OEM replacement air filters and intake kits are covered under the warranty for defective materials or workmanship for one million miles. If for any reason your high performance filter should fail due to workmanship or defective materials, the original consumer who purchased the S&B Air Filter or Intake Kit must simply provide proof of purchase to be eligible for the warranty. In order to maintain the S&B warranty, please use S&B oil and cleaner to service the filter and the filter must be cleaned as indicated in the literature provided with each product.

NOTE: Refer to www.sbfilters.com for complete warranty information.

+ S&B FILTERS TESTS AND POSTS OUR FINDINGS TO THE STANDARDS MOST OTHER PERFORMANCE FILTER COMPANIES DON'T – ISO 5011.



The ISO (International Organization for Standardization) establishes and specifies uniform test procedures, conditions, equipment and a performance report to permit direct laboratory performance comparison of air filters and induction systems.

Testing to these high standards enables us to accurately measure our products against not only OEM [Original Equipment Manufacturer] equipment, but also to the competition, allowing us to establish the air filter performance benchmark, which we are determined to do.

ISO is a worldwide federation of national standards bodies. The work of preparing International Standards is normally carried out through ISO technical committees. The specific individual International Standard utilized by S&B and automotive manufacturers establishes and specifies uniform test



“THIS STANDARD IS IMPORTANT TO S&B BECAUSE IT IS THE WORLDWIDE ACCEPTED YARDSTICK FOR MEASURING THE PERFORMANCE OF FILTERS AND INTAKE KITS UTILIZED BY ALL OF THE AUTOMAKERS.”

procedures, conditions, equipment, and a performance report to permit the direct laboratory performance comparison of air cleaners, in this case, those used on internal combustion engines and compressors used in automotive and industrial applications.

The performance characteristics of greatest interest are air flow restriction (differential pressure), dust collection efficiency and dust capacity. The ISO 5011 Standard is what S&B Filters adheres to as we seek innovations and improvements in our product line, and to test our products so they meet the highest standard possible. We feel this is the standard that all performance filter manufacturers should be using to develop their products.

The end result is simple: increased horsepower by reducing the restriction of the air filter and/or intake kit while still protecting the engine. Trust your performance needs to the only performance filter manufacturer who tests to these standard and post results – trust S&B.

TABLE OF CONTENTS

02-03	History	18-19	Replacement Filters for Intake Kits
04-05	Warranty Information	20-22	Intake Kit Photo Gallery
06-07	Cleaning & Oiling Kits	23-25	Universal Filters
08-09	The Truth About Dry Filters	26	Crankcase Filters
10-11	Intake Kit Features & Benefits	27	Custom Assemblies
12-13	Cummins	28	Round Open Filters
14-15	Powerstroke	29-30	Ultima Tops & Assemblies
16-17	Duramax	31-34	Universal Filters
18-19	Intake Kit Application Guide: Gas & Diesel Vehicles	35	OE Drop-In Filters Application Guide

PRECISION

CLEANING & OILING KIT

Never over oil your performance filter again.

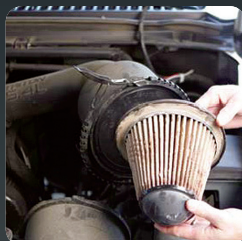
S&B's Precision Cleaning & Oiling Kit allows vehicle owners to properly maintain their high performance air filters by precisely applying the correct amount of oil. The clearly marked bottle and easy-to-use applicator allow the user to measure and apply the proper amount of oil for each application. S&B has conducted extensive testing with the Precision Cleaning Kit to ensure that it can be used on most high performance filters available today.

Features and Benefits

- Quickly and accurately restore your high performance air filter to like-new condition
- Works on most high performance air filters brands
- Takes the guess work out of cleaning and oiling your performance air filter



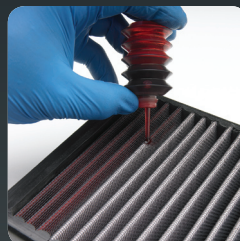
Three easy steps to bringing your high performance air filter back to life:



1. Remove and clean the filter from your vehicle.

Clean sealing area of filter and filter housing with a clean soft clean rag. Do not start your vehicle without a filter installed. Shake or lightly tap the filter on a hard surface to remove and loosen large particles and debris. A soft brush may be used to loosen large pieces of debris or bugs. Make note of which side of the filter has trapped the dirt. Use S&B's Filter Cleaner to clean the filter.

(See provided materials for complete instructions.)



3. Allow oil to bleed for 20-30 minutes, then apply remaining oil to any white areas and re-install air filter.

After allowing the oil to bleed for 20-30 minutes, inspect the filter for any white areas where the oil did not cover. With the remaining oil in the Applicator, apply a small amount of oil to those white areas. Apply the correct amount of oil (+ 5 grams) is critical to proper performance of the filter. **DO NOT over oil your filter.**



2. Fill applicator bottle with the correct amount of oil.

Rotate the Squeeze Bottle of Oil with the cap facing downward. Make note of your starting point on the measurement gauge to make sure that the proper amount of oil is dispensed. When reoiling a filter, it is critical to place the oil on the side where the dirt will accumulate. Using the applicator bottle, place a drop of oil on the peak of each pleat where it meets urethane (rubber).

For more information or to locate the right amount of oil for your application please log on to: www.sbfilters.com.

Complete instructions available on supplied interactive CD-Rom.



S&B's Precision Cleaning Kit is safe for most high performance filters.

No matter which brand, shape or size - the Precision Cleaning Kit will restore your high performance filter to like-new condition.




More Cleaning & Oiling Products

S&B Filters' cleaning and oiling solution allows you to maximize the performance and longevity of your high performance filter. Our cleaning and oiling solutions will work on any S&B filter and 95% of all high performance filters.



FILTER MAINTENANCE KITS (includes oil and cleaner)		Part NUMBER
NEW Precision Cleaning & Oil Service Kit: 12oz Cleaning Solution, 8oz Squeeze Bottle of Red Oil , Precision Oil Applicator, Decal, DVD of How to Service Your Filter		88-0005
NEW Precision Cleaning & Oil Service Kit: 12oz Cleaning Solution, 8oz Squeeze Bottle of Blue Oil , Precision Oil Applicator, Decal, DVD of How to Service Your Filter		88-0007
Aerosol Can Filter Service Kit: 6 1/2" oz. Spray Oil, 12 oz. Filter Cleaner*		88-5000
Squeeze Bottle Filter Service Kit: 8" oz. Squeeze Bottle Oil, 12 oz. Filter Cleaner*		88-5050
OIL FOR FILTER SERVICE KITS		
6 1/2 ounce Aerosol Can (Red Oil)		88-0504
12 ounce Aerosol Can (Red Oil)		88-0001
12 ounce Aerosol Can (Blue Oil)		88-0002
8 ounce Squeeze Bottle (Red Oil)		88-0533
8 ounce Squeeze Bottle (Blue Oil)		88-0006
1 Gallon Refill Bottle (Red Oil)		88-0551
1 Gallon Refill Bottle (Red Biodegradable Oil)		88-0003
CLEANER FOR FILTER SERVICE KITS		
12 oz. Finger Pump Spray Bottle (Cleaning Solution)		88-0606
32 oz. Trigger Spray Bottle (Cleaning Solution)		88-0621
1 Gallon Refill Bottle (Cleaning Solution)		88-0635
1 Gallon Refill Bottle (Biodegradable Cleaning Solution)		88-0004


* Consumer must have a scale that measures in grams to apply the oil for this kit as the amount of oil applied to the filter is critical to its performance. Use the Precision Cleaning & Oiling Kit if a scale is not available.

BEFORE AFTER CLEANING AFTER OILING

S&B's Precision Cleaning and Oiling Kit restores your high performance filter to like new condition.

Inspect your S&B High Performance Filter at every oil change and clean if there is a significant accumulation of dirt. Cleaning your filter more frequently will improve the airflow resulting in better performance and fuel economy.



www.verociousmotorsports.com

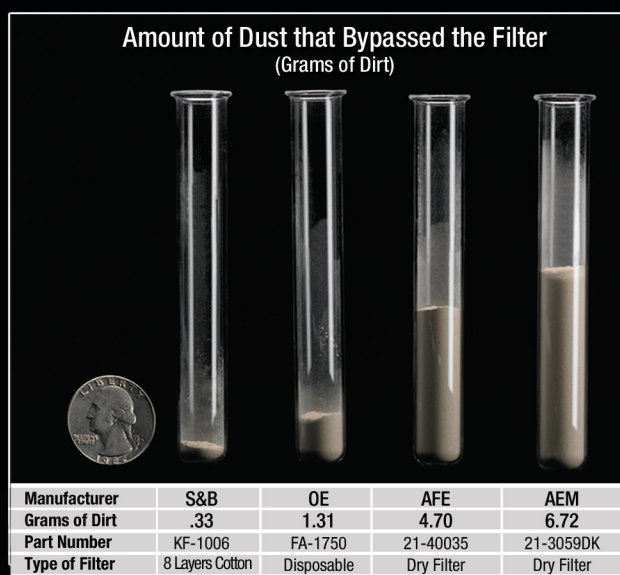
818C South Heald St.
Wilmington, DE 19801

p: 877.VM5.1320
f: 302.472.0604

Would you pour 5 grams of dirt into your turbo?

You may be if you're using a "Dry Performance" Filter.

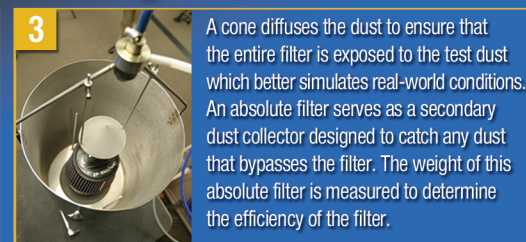
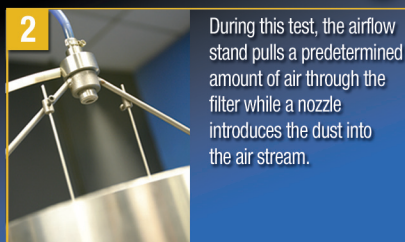
Similar to baby powder in texture, S&B conducts testing with ISO Coarse Test Dust to ensure your vehicle's engine is protected. The packet of dust contains 5 grams of ISO Coarse Test Dust.



Visit
www.sbfilters.com/truth
to request a packet
of our
**ISO Certified Coarse
Test Dust.**

Tested to the ISO 5011 Test Standard

At S&B, we give you all the airflow without sacrificing efficiency. Is your vehicle's engine protected?



When will S&B introduce a Dry Performance Filter?

S&B uses 8-layers of cotton to produce air filters and intake kits with substantially more airflow and radically high efficiency rates (over 99.0%) giving the consumer more power without the fear of engine damage. S&B backs up this claim by publishing ISO 5011 Test Results on its filters and intake kits.

S&B won't release a Dry Filter until our testing demonstrates that the dry filter technology can out perform 8-layers of cotton gauze in airflow while still maintaining an efficiency rate of at least 99.0%. Our competitors currently selling Dry Filters do not share this same philosophy.

Both AFE and AEM claim that their dry filters are 99.4% efficient; however, our ISO 5011 Test Results indicate otherwise. Each manufacturer may claim to have conducted similar testing, but these tests are often run at a low airflow rate in order to produce high efficiency results. S&B performs its testing at the vehicle's max rated airflow obtained at peak horsepower to ensure engine protection even under extreme driving conditions.



Test Vehicle

We used the stock induction system for the 99-03 Ford Powerstroke 7.3L to establish the stock baseline for airflow, efficiency and capacity.



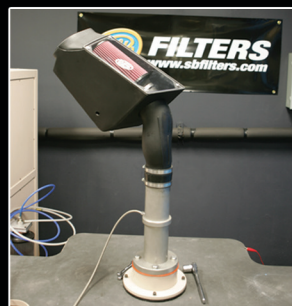
Test Conditions

Testing was conducted in a climate controlled laboratory. The average environmental conditions were 71.99 degrees Fahrenheit, 50.92 percent relative humidity with a barometric pressure of 28.79. All environmental conditions were within the ISO 5011 parameters.



Test Method

The intake kits and filters for each manufacturer were tested according to the ISO 5011 Test Procedures used by most vehicle manufacturers. The test measures restriction (airflow), efficiency and capacity. Visit www.sbfilters.com/truth to see a complete copy of the test standard.



Airflow

The intake kit for each manufacturer was secured to the ISO 5011 Test Stand in order to measure the restriction level of each kit. Simply put, we measure how difficult it is for the air to travel through the intake kit using the stock induction system as the baseline.

Dirt Retention

We conducted the efficiency testing at the maximum airflow rate (628 cfm) generated by a stock Ford Powerstroke 7.3L at peak horsepower to ensure absolute engine protection in real world conditions. Three (3) filters from each manufacturer were tested to obtain an average. The Test Tubes on the previous page demonstrate the average amount of dirt that passed through each filter.

The Results

S&B improved the airflow by 55.7% versus stock while maintaining a high efficiency rate of 99.69% (only .07% less than the OE filter).

AFE and AEM also showed improvements in airflow, but at what cost as their efficiency rates fell far below the OE standard of 99.76%.

ISO Testing Data Summary

	S&B KF-1006	OE FA-1750	AFE 21-40035	AEM 21-3059DK
Improvement in Airflow vs. OE	55.7%	BASE LINE	68.8%	65.9%
Efficiency	99.69%	99.76%	93.44%	95.29%
Capacity (grams)	107.0	542.0	66.9	136.1

Visit www.sbfilters.com/truth to download a complete copy of the test results.

S&B
KF-1006
8-layers Cotton
(Oiled)



OE
FA-1750



AFE
21-40035
Dry Media



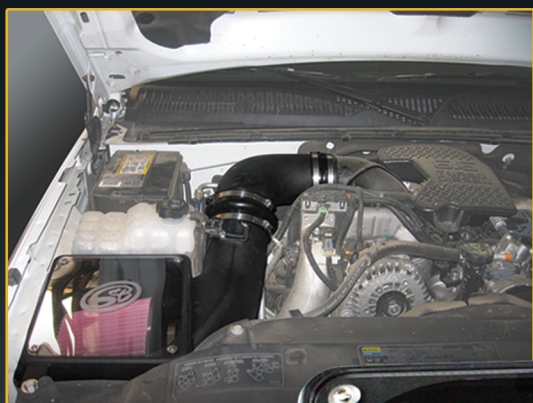
AEM
21-3059DK
Dry Media



All the Flow... None of the Risk!

Diesel Cold Air Intake Kits by S&B Filters

Flows 46.1% Better than OE...
and Still Stops 99.27% of the Dirt



Part number 75-5013-1
shown in picture



Hump adapter allows engine
movement for long
lasting performance

Voltage mapped
to eliminate
"check engine" codes

8-ply filter features
1" pleats for greater
power & mileage

Custom enclosure protects filter
from engine heat & dirt

DIESEL COLD AIR PERFORMANCE INTAKE KITS

Our diesel performance intake kits are all about improving airflow to your vehicle's engine. It's just a matter of exceptional design. Better airflow translates into a noticeable increase in power, acceleration and most importantly...bragging rights.

Features and Benefits

- Washable, reusable filter is manufactured with eight layers of premium cotton gauze to maximize airflow and filtration for your diesel application
- Custom high-performance air box isolates the filter from engine heat, drawing in cooler outside air to boost engine performance
- Exceptional design streamlines airflow, allowing the engine to ingest more air, increasing horsepower
- Simple to install
- CARB exempt Each kit we produce is manufactured to the highest standards and submitted for CARB exemption.*

Better Air Flow = More Horsepower

S&B's intake kits are engineered to improve the air flow to your vehicle's engine. It starts with years of research and development, as well as the most technically advanced testing. S&B tests to the ISO 5011 Air Filtration Standard in a climate – controlled lab when designing and testing our intake kits.

This is the same technology used by Ford, Chrysler and General Motors to design the original induction system that comes on your vehicle.

Thorough Research & Development

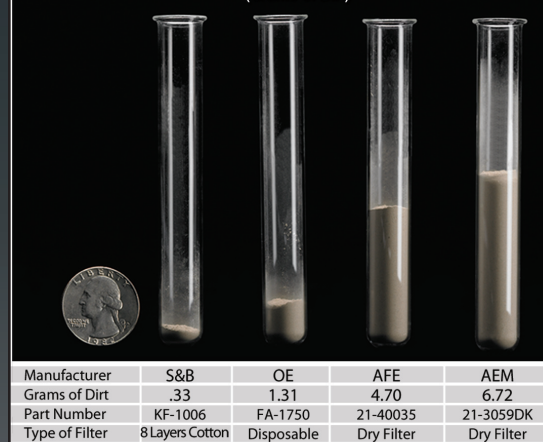
During our ISO 5011 testing, we first measure the restriction of the air flow through your vehicle's original induction system in order to establish a baseline. The goal of a Performance Intake Kit is to reduce the restriction of the air flow to your vehicle's engine. In layman's terms, we want to make it easier for the engine to breathe. By reducing the restriction of the air flow, your engine will have better throttle response and produce more horsepower and torque. Since your engine will not have to work as hard to produce the required amount of power – the result is better fuel economy.

Back It Up – Certified Test Results

S&B provides ISO 5011 Certified Test Results for its intake kits, so you can see exactly how much the air flow was improved (restriction decreased) as well as the efficiency of the filter. For example, the S&B intake kit for the 2002 Dodge Ram 5.9L Cummins Diesel improves the air flow 40.2% versus the OE Induction System while still stopping 99.24% of the dirt. To see the test results for the Dodge Ram or your vehicle, simply look up your part number and click on the ISO Test Results specific to your vehicle application. Demand ISO 5011 Certified Test Results prior to purchasing your next Performance Intake Kit.



Amount of Dust that Bypassed the Filter
(Grams of Dirt)



At S&B we give you all the airflow without sacrificing efficiency. Is your vehicle's engine protected? To learn more visit www.sbfilters.com/truth

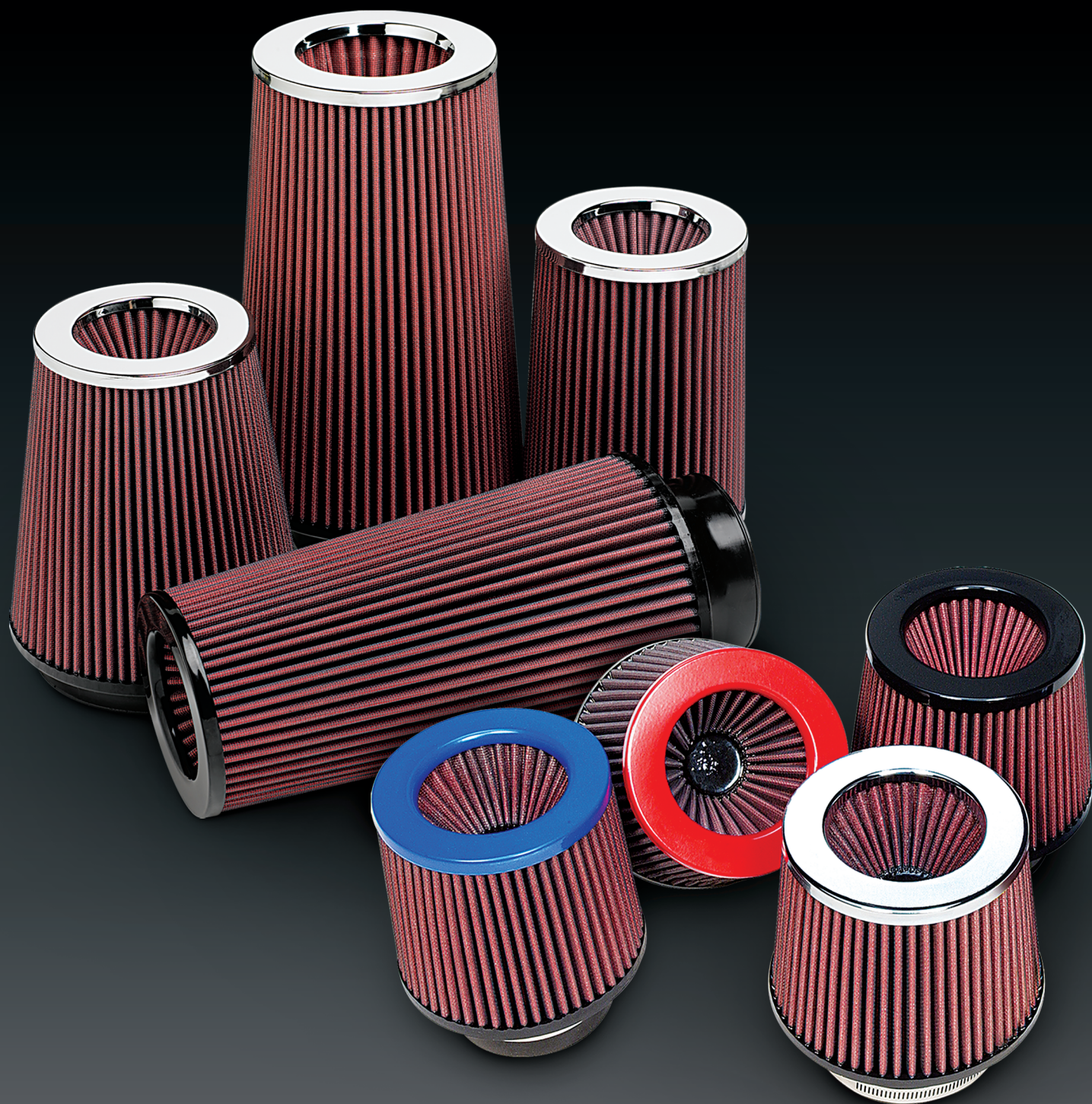


www.veraciousmotorsports.com

818C South Heald St.
Wilmington, DE 19801

p: 877.VM5.1320
f: 302.472.0604

UNIVERSAL FILTERS



+ POWER STACK & RUBBER HIGH PERFORMANCE FILTER APPLICATION GUIDE

(D)		(L)		(FA)			
Filter Top		Filter Height		Style of			
Width				Flange			
Inch	MM	Inch	MM	Type	Angle	Part Number	End Cap
2-1/4" or 57MM INSIDE DIAMETER MOUNTING FLANGE							
5 - 1/4	133	5	127	Centered		R0631	Rubber
5 - 1/4	133	5	127	Centered		R0632	Chrome
5 - 1/4	133	5	127	Centered		R0633	Black
5 - 1/4	133	5	127	Centered		R0634	Red
5 - 1/4	133	5	127	Centered		R0635	Blue
5 - 1/4	133	6	152	Centered		R0636	Rubber
5 - 1/4	133	6	152	Centered		R0637	Chrome
5 - 1/4	133	6	152	Centered		R0638	Black
5 - 1/4	133	6	152	Centered		R0639	Red
5 - 1/4	133	6	152	Centered		R0640	Blue
5 - 1/4	133	7	178	Centered		R0641	Rubber
5 - 1/4	133	7	178	Centered		R0642	Chrome
5 - 1/4	133	7	178	Centered		R0643	Black
5 - 1/4	133	7	178	Centered		R0644	Red
5 - 1/4	133	7	178	Centered		R0645	Blue
5 - 1/4	133	8	203	Centered		R0646	Rubber
5 - 1/4	133	8	203	Centered		R0647	Chrome
5 - 1/4	133	8	203	Centered		R0648	Black
5 - 1/4	133	8	203	Centered		R0649	Red
5 - 1/4	133	8	203	Centered		R0650	Blue
5 - 1/4	133	9	228	Centered		R0651	Rubber
5 - 1/4	133	9	228	Centered		R0652	Chrome
5 - 1/4	133	9	228	Centered		R0653	Black
5 - 1/4	133	9	228	Centered		R0654	Red
5 - 1/4	133	9	228	Centered		R0655	Blue
5 - 1/4	133	10	254	Centered		R0656	Rubber
5 - 1/4	133	10	254	Centered		R0657	Chrome
5 - 1/4	133	10	254	Centered		R0658	Black
5 - 1/4	133	10	254	Centered		R0659	Red
5 - 1/4	133	10	254	Centered		R0660	Blue
5 - 1/4	133	12	305	Centered		R0661	Rubber
5 - 1/4	133	12	305	Centered		R0662	Chrome
5 - 1/4	133	12	305	Centered		R0663	Black
5 - 1/4	133	12	305	Centered		R0664	Red
5 - 1/4	133	12	305	Centered		R0665	Blue
Inch	MM	Inch	MM	Type	Angle	Part Number	End Cap
2-1/2" or 63MM INSIDE DIAMETER MOUNTING FLANGE							
5 - 1/4	133	5	127	Centered		R0666	Rubber
5 - 1/4	133	5	127	Centered		R0667	Chrome
5 - 1/4	133	5	127	Centered		R0668	Black
5 - 1/4	133	5	127	Centered		R0669	Red
5 - 1/4	133	5	127	Centered		R0670	Blue
5 - 1/4	133	6	152	Centered		R0671	Rubber
5 - 1/4	133	6	152	Centered		R0672	Chrome
5 - 1/4	133	6	152	Centered		R0673	Black
5 - 1/4	133	6	152	Centered		R0674	Red
5 - 1/4	133	6	152	Centered		R0675	Blue
5 - 1/4	133	7	178	Centered		R0676	Rubber
5 - 1/4	133	7	178	Centered		R0677	Chrome
5 - 1/4	133	7	178	Centered		R0678	Black
5 - 1/4	133	7	178	Centered		R0679	Red
5 - 1/4	133	7	178	Centered		R0680	Blue
5 - 1/4	133	8	203	Centered		R0681	Rubber
5 - 1/4	133	8	203	Centered		R0682	Chrome
5 - 1/4	133	8	203	Centered		R0683	Black
5 - 1/4	133	8	203	Centered		R0684	Red
5 - 1/4	133	8	203	Centered		R0685	Blue
5 - 1/4	133	9	228	Centered		R0686	Rubber
5 - 1/4	133	9	228	Centered		R0687	Chrome
5 - 1/4	133	9	228	Centered		R0688	Black
5 - 1/4	133	9	228	Centered		R0689	Red
5 - 1/4	133	9	228	Centered		R0690	Blue
5 - 1/4	133	10	254	Centered		R0691	Rubber
5 - 1/4	133	10	254	Centered		R0692	Chrome
5 - 1/4	133	10	254	Centered		R0693	Black
5 - 1/4	133	10	254	Centered		R0694	Red
5 - 1/4	133	10	254	Centered		R0695	Blue
5 - 1/4	133	12	305	Centered		R0696	Rubber
5 - 1/4	133	12	305	Centered		R0697	Chrome
5 - 1/4	133	12	305	Centered		R0698	Black
5 - 1/4	133	12	305	Centered		R0699	Red
5 - 1/4	133	12	305	Centered		R0700	Blue

(D)		(L)		(FA)			
Filter Top		Filter Height		Style of			
Width				Flange			
Inch	MM	Inch	MM	Type	Angle	Part Number	End Cap
2-3/4" or 70MM INSIDE DIAMETER MOUNTING FLANGE							
5 - 1/4	133	5	127	Centered		R0701	Rubber
5 - 1/4	133	5	127	Centered		R0702	Chrome
5 - 1/4	133	5	127	Centered		R0703	Black
5 - 1/4	133	5	127	Centered		R0704	Red
5 - 1/4	133	5	127	Centered		R0705	Blue
5 - 1/4	133	6	152	Centered		R0706	Rubber
5 - 1/4	133	6	152	Centered		R0707	Chrome
5 - 1/4	133	6	152	Centered		R0708	Black
5 - 1/4	133	6	152	Centered		R0709	Red
5 - 1/4	133	6	152	Centered		R0710	Blue
5 - 1/4	133	7	178	Centered		R0711	Rubber
5 - 1/4	133	7	178	Centered		R0712	Chrome
5 - 1/4	133	7	178	Centered		R0713	Black
5 - 1/4	133	7	178	Centered		R0714	Red
5 - 1/4	133	7	178	Centered		R0715	Blue
5 - 1/4	133	8	203	Centered		R0716	Rubber
5 - 1/4	133	8	203	Centered		R0717	Chrome
5 - 1/4	133	8	203	Centered		R0718	Black
5 - 1/4	133	8	203	Centered		R0719	Red
5 - 1/4	133	8	203	Centered		R0720	Blue
5 - 1/4	133	9	228	Centered		R0721	Rubber
5 - 1/4	133	9	228	Centered		R0722	Chrome
5 - 1/4	133	9	228	Centered		R0723	Black
5 - 1/4	133	9	228	Centered		R0724	Red
5 - 1/4	133	9	228	Centered		R0725	Blue
5 - 1/4	133	10	254	Centered		R0726	Rubber
5 - 1/4	133	10	254	Centered		R0727	Chrome
5 - 1/4	133	10	254	Centered		R0728	Black
5 - 1/4	133	10	254	Centered		R0729	Red
5 - 1/4	133	10	254	Centered		R0730	Blue
5 - 1/4	133	12	305	Centered		R0731	Rubber
5 - 1/4	133	12	305	Centered		R0732	Chrome
5 - 1/4	133	12	305	Centered		R0733	Black
5 - 1/4	133	12	305	Centered		R0734	Red
5 - 1/4	133	12	305	Centered		R0735	Blue
Inch	MM	Inch	MM	Type	Angle	Part Number	End Cap
3" or 76MM INSIDE DIAMETER MOUNTING FLANGE							
5 - 1/4	133	5	127	Centered		R0736	Rubber
5 - 1/4	133	5	127	Centered		R0737	Chrome
5 - 1/4	133	5	127	Centered		R0738	Black
5 - 1/4	133	5	127	Centered		R0739	Red
5 - 1/4	133	5	127	Centered		R0740	Blue
5 - 1/4	133	6	152	Centered		R0741	Rubber
5 - 1/4	133	6	152	Centered		R0742	Chrome
5 - 1/4	133	6	152	Centered		R0743	Black
5 - 1/4	133	6	152	Centered		R0744	Red
5 - 1/4	133	6	152	Centered		R0745	Blue
5 - 1/4	133	7	178	Centered		R0746	Rubber
5 - 1/4	133	7	178	Centered		R0747	Chrome
5 - 1/4	133	7	178	Centered		R0748	Black
5 - 1/4	133	7	178	Centered		R0749	Red
5 - 1/4	133	7	178	Centered		R0750	Blue
5 - 1/4	133	8	203	Centered		R0751	Rubber
5 - 1/4	133	8	203	Centered		R0752	Chrome
5 - 1/4	133	8	203	Centered		R0753	Black
5 - 1/4	133	8	203	Centered		R0754	Red
5 - 1/4	133	8	203	Centered		R0755	Blue
5 - 1/4	133	9	228	Centered		R0756	Rubber
5 - 1/4	133	9	228	Centered		R0757	Chrome
5 - 1/4	133	9	228	Centered		R0758	Black
5 - 1/4	133	9	228	Centered		R0759	Red
5 - 1/4	133	9	228	Centered		R0760	Blue
5 - 1/4	133	10	254	Centered		R0761	Rubber
5 - 1/4	133	10	254	Centered		R0762	Chrome
5 - 1/4	133	10	254	Centered		R0763	Black
5 - 1/4	133	10	254	Centered		R0764	Red
5 - 1/4	133	10	254	Centered		R0765	Blue
5 - 1/4	133	12	305	Centered		R0766	Rubber
5 - 1/4	133	12	305	Centered		R0767	Chrome
5 - 1/4	133	12	305	Centered		R0768	Black
5 - 1/4	133	12	305	Centered		R0769	Red
5 - 1/4	133	12	305	Centered		R0770	Blue

+ POWER STACK & RUBBER HIGH PERFORMANCE FILTER APPLICATION GUIDE (CONTINUED)

(D)		(L)		(FA)			
Filter Top		Filter Height		Style of			
Width				Flange			
Inch	MM	Inch	MM	Type	Angle	Part Number	End Cap
3 - 1/8" OR 76MM INSIDE DIAMETER MOUNTING FLANGE							
5 - 1/4	133	5	127	Centered		R0771	Rubber
5 - 1/4	133	5	127	Centered		R0772	Chrome
5 - 1/4	133	5	127	Centered		R0773	Black
5 - 1/4	133	5	127	Centered		R0774	Red
5 - 1/4	133	5	127	Centered		R0775	Blue
5 - 1/4	133	6	152	Centered		R0776	Rubber
5 - 1/4	133	6	152	Centered		R0777	Chrome
5 - 1/4	133	6	152	Centered		R0778	Black
5 - 1/4	133	6	152	Centered		R0779	Red
5 - 1/4	133	6	152	Centered		R0780	Blue
5 - 1/4	133	7	178	Centered		R0781	Rubber
5 - 1/4	133	7	178	Centered		R0782	Chrome
5 - 1/4	133	7	178	Centered		R0783	Black
5 - 1/4	133	7	178	Centered		R0784	Red
5 - 1/4	133	7	178	Centered		R0785	Blue
5 - 1/4	133	8	203	Centered		R0786	Rubber
5 - 1/4	133	8	203	Centered		R0787	Chrome
5 - 1/4	133	8	203	Centered		R0788	Black
5 - 1/4	133	8	203	Centered		R0789	Red
5 - 1/4	133	8	203	Centered		R0790	Blue
5 - 1/4	133	9	228	Centered		R0791	Rubber
5 - 1/4	133	9	228	Centered		R0792	Chrome
5 - 1/4	133	9	228	Centered		R0793	Black
5 - 1/4	133	9	228	Centered		R0794	Red
5 - 1/4	133	9	228	Centered		R0795	Blue
5 - 1/4	133	10	254	Centered		R0796	Rubber
5 - 1/4	133	10	254	Centered		R0797	Chrome
5 - 1/4	133	10	254	Centered		R0798	Black
5 - 1/4	133	10	254	Centered		R0799	Red
5 - 1/4	133	10	254	Centered		R0800	Blue
5 - 1/4	133	12	305	Centered		R0801	Rubber
5 - 1/4	133	12	305	Centered		R0802	Chrome
5 - 1/4	133	12	305	Centered		R0803	Black
5 - 1/4	133	12	305	Centered		R0804	Red
5 - 1/4	133	12	305	Centered		R0805	Blue
Inch	MM	Inch	MM	Type	Angle	Part Number	End Cap
3 - 1/2" OR 89MM INSIDE DIAMETER MOUNTING FLANGE							
5 - 1/4	133	5	127	Centered		R0806	Rubber
5 - 1/4	133	5	127	Centered		R0807	Chrome
5 - 1/4	133	5	127	Centered		R0808	Black
5 - 1/4	133	5	127	Centered		R0809	Red
5 - 1/4	133	5	127	Centered		R0810	Blue
5 - 1/4	133	6	152	Centered		R0811	Rubber
5 - 1/4	133	6	152	Centered		R0812	Chrome
5 - 1/4	133	6	152	Centered		R0813	Black
5 - 1/4	133	6	152	Centered		R0814	Red
5 - 1/4	133	6	152	Centered		R0815	Blue
5 - 1/4	133	7	178	Centered		R0816	Rubber
5 - 1/4	133	7	178	Centered		R0817	Chrome
5 - 1/4	133	7	178	Centered		R0818	Black
5 - 1/4	133	7	178	Centered		R0819	Red
5 - 1/4	133	7	178	Centered		R0820	Blue
5 - 1/4	133	8	203	Centered		R0821	Rubber
5 - 1/4	133	8	203	Centered		R0822	Chrome
5 - 1/4	133	8	203	Centered		R0823	Black
5 - 1/4	133	8	203	Centered		R0824	Red
5 - 1/4	133	8	203	Centered		R0825	Blue
5 - 1/4	133	9	228	Centered		R0826	Rubber
5 - 1/4	133	9	228	Centered		R0827	Chrome
5 - 1/4	133	9	228	Centered		R0828	Black
5 - 1/4	133	9	228	Centered		R0829	Red
5 - 1/4	133	9	228	Centered		R0830	Blue
5 - 1/4	133	10	254	Centered		R0831	Rubber
5 - 1/4	133	10	254	Centered		R0832	Chrome
5 - 1/4	133	10	254	Centered		R0833	Black
5 - 1/4	133	10	254	Centered		R0834	Red
5 - 1/4	133	10	254	Centered		R0835	Blue
5 - 1/4	133	12	305	Centered		R0836	Rubber
5 - 1/4	133	12	305	Centered		R0837	Chrome
5 - 1/4	133	12	305	Centered		R0838	Black
5 - 1/4	133	12	305	Centered		R0839	Red
5 - 1/4	133	12	305	Centered		R0840	Blue
Inch	MM	Inch	MM	Type	Angle	Part Number	End Cap
4" OR 102MM INSIDE DIAMETER MOUNTING FLANGE							
5 - 1/4	133	5	127	Centered		R0841	Rubber
5 - 1/4	133	5	127	Centered		R0842	Chrome
5 - 1/4	133	5	127	Centered		R0843	Black
5 - 1/4	133	5	127	Centered		R0844	Red
5 - 1/4	133	5	127	Centered		R0845	Blue
5 - 1/4	133	6	152	Centered		R0846	Rubber
5 - 1/4	133	6	152	Centered		R0847	Chrome
5 - 1/4	133	6	152	Centered		R0848	Black
5 - 1/4	133	6	152	Centered		R0849	Red
5 - 1/4	133	6	152	Centered		R0850	Blue
5 - 1/4	133	7	178	Centered		R0851	Rubber
5 - 1/4	133	7	178	Centered		R0852	Chrome
5 - 1/4	133	7	178	Centered		R0853	Black
5 - 1/4	133	7	178	Centered		R0854	Red
5 - 1/4	133	7	178	Centered		R0855	Blue
5 - 1/4	133	8	203	Centered		R0856	Rubber
5 - 1/4	133	8	203	Centered		R0857	Chrome
5 - 1/4	133	8	203	Centered		R0858	Black

(D)		(L)		(FA)			
Filter Top		Filter Height		Style of			
Width				Flange			
Inch	MM	Inch	MM	Type	Angle	PartNumber	End Cap
4" OR 102MM INSIDE DIAMETER MOUNTING FLANGE							
5 - 1/4	133	8	203	Centered		R0859	Red
5 - 1/4	133	8	203	Centered		R0860	Blue
5 - 1/4	133	9	228	Centered		R0861	Rubber
5 - 1/4	133	9	228	Centered		R0862	Chrome
5 - 1/4	133	9	228	Centered		R0863	Black
5 - 1/4	133	9	228	Centered		R0864	Red
5 - 1/4	133	9	228	Centered		R0865	Blue
5 - 1/4	133	10	254	Centered		R0866	Rubber
5 - 1/4	133	10	254	Centered		R0867	Chrome
5 - 1/4	133	10	254	Centered		R0868	Black
5 - 1/4	133	10	254	Centered		R0869	Red
5 - 1/4	133	10	254	Centered		R0870	Blue
5 - 1/4	133	12	305	Centered		R0871	Rubber
5 - 1/4	133	12	305	Centered		R0872	Chrome
5 - 1/4	133	12	305	Centered		R0873	Black
5 - 1/4	133	12	305	Centered		R0874	Red
5 - 1/4	133	12	305	Centered		R0875	Blue
Inch	MM	Inch	MM	Type	Angle	Part Number	End Cap
4 - 1/2" OR 114MM INSIDE DIAMETER MOUNTING FLANGE							
5 - 1/4	133	5	127	Centered		R0876	Rubber
5 - 1/4	133	5	127	Centered		R0877	Chrome
5 - 1/4	133	5	127	Centered		R0878	Black
5 - 1/4	133	5	127	Centered		R0879	Red
5 - 1/4	133	5	127	Centered		R0880	Blue
5 - 1/4	133	6	152	Centered		R0881	Rubber
5 - 1/4	133	6	152	Centered		R0882	Chrome
5 - 1/4	133	6	152	Centered		R0883	Black
5 - 1/4	133	6	152	Centered		R0884	Red
5 - 1/4	133	6	152	Centered		R0885	Blue
5 - 1/4	133	7	178	Centered		R0886	Rubber
5 - 1/4	133	7	178	Centered		R0887	Chrome
5 - 1/4	133	7	178	Centered		R0888	Black
5 - 1/4	133	7	178	Centered		R0889	Red
5 - 1/4	133	7	178	Centered		R0890	Blue
5 - 1/4	133	8	203	Centered		R0891	Rubber
5 - 1/4	133	8	203	Centered		R0892	Chrome
5 - 1/4	133	8	203	Centered		R0893	Black
5 - 1/4	133	8	203	Centered		R0894	Red
5 - 1/4	133	8	203	Centered		R0895	Blue
5 - 1/4	133	9	228	Centered		R0896	Rubber
5 - 1/4	133	9	228	Centered		R0897	Chrome
5 - 1/4	133	9	228	Centered		R0898	Black
5 - 1/4	133	9	228	Centered		R0899	Red
5 - 1/4	133	9	228	Centered		R0900	Blue
5 - 1/4	133	10	254	Centered		R0901	Rubber
5 - 1/4	133	10	254	Centered		R0902	Chrome
5 - 1/4	133	10	254	Centered		R0903	Black
5 - 1/4	133	10	254	Centered		R0904	Red
5 - 1/4	133	10	254	Centered		R0905	Blue
5 - 1/4	133	12	305	Centered		R0906	Rubber
5 - 1/4	133	12	305	Centered		R0907	Chrome
5 - 1/4	133	12	305	Centered		R0908	Black
5 - 1/4	133	12	305	Centered		R0909	Red
5 - 1/4	133	12	305	Centered		R0910	Blue
Inch	MM	Inch	MM	Type	Angle	Part Number	End Cap
6" OR 152MM INSIDE DIAMETER MOUNTING FLANGE							
5 - 1/4	133	5	127	Centered		R0911	Rubber
5 - 1/4	133	5	127	Centered		R0912	Chrome
5 - 1/4	133	5	127	Centered		R0913	Black
5 - 1/4	133	5	127	Centered		R0914	Red
5 - 1/4	133	5	127	Centered		R0915	Blue
5 - 1/4	133	6	152	Centered		R0916	Rubber
5 - 1/4	133	6	152	Centered		R0917	Chrome
5 - 1/4	133	6	152	Centered		R0918	Black
5 - 1/4	133	6	152	Centered		R0919	Red
5 - 1/4	133	6	152	Centered		R0920	Blue
5 - 1/4	133	7	178	Centered		R0921	Rubber
5 - 1/4	133	7	178	Centered		R0922	Chrome
5 - 1/4	133	7	178	Centered		R0923	Black
5 - 1/4	133	7	178	Centered		R0924	Red
5 - 1/4	133	7	178	Centered		R0925	Blue
5 - 1/4	133	8	203	Centered		R0926	Rubber
5 - 1/4	133	8	203	Centered		R0927	Chrome
5 - 1/4	133	8	203	Centered		R0928	Black
5 - 1/4	133	8	203	Centered		R0929	Red
5 - 1/4	133	8	203	Centered		R0930	Blue
5 - 1/4	133	9	228	Centered		R0931	Rubber
5 - 1/4	133	9	228	Centered		R0932	Chrome
5 - 1/4	133	9	228	Centered		R0933	Black
5 - 1/4	133	9	228	Centered		R0934	Red
5 - 1/4	133	9	228	Centered		R0935	Blue
5 - 1/4	133	10	254	Centered		R0936	Rubber
5 - 1/4	133	10	254	Centered		R0937	Chrome
5 - 1/4	133	10	254	Centered		R0938	Black
5 - 1/4	133	10	254	Centered		R0939	Red
5 - 1/4	133	10	254	Centered		R0940	Blue
5 - 1/4	133	12	305	Centered		R0941	Rubber
5 - 1/4	133	12	305	Centered		R0942	Chrome
5 - 1/4	133	12	305	Centered		R0943	Black
5 - 1/4	133	12	305	Centered		R0944	Red
5 - 1/4	133	12	305	Centered		R0945	Blue

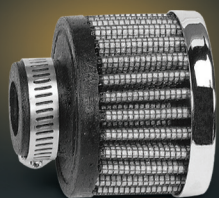
+ CRANK CASE VENT FILTERS

Filters are designed for a direct mount by simply pressing the valve stem into the rubber grommets in the valve covers. The product is available with a chrome or rubber top.



Aluminum Base Vent Tubes				
Vent Diameter	Chrome Top Outer Diameter	Rubber Top Filter Height	Chrome Top Part Number	Rubber Top Part Number
1/2	2	1 1/2	26-1517	26-1517JR
5/8	2	1 1/2	26-1518	26-1518JR
3/4	2	1 1/2	26-1519	26-1519JR
1	2	1 1/2	26-1520	26-1520JR
5/8	3	2 1/2	26-1618	26-1618JR
3/4	3	2 1/2	26-1619	26-1619JR

Designed to work on engines, transmissions as well as oil and gas tanks. Filters clamp directly to either plastic or metal tubing. Available with or without a shield.

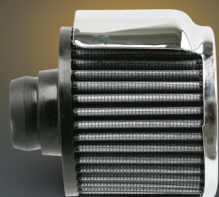


Clamp-On Crankcase Vent Filters				
Flange ID	Chrome Top Filter Diameter	Rubber Top Filter Height	Chrome Top Part Number	Rubber Top Part Number
5/16	1 3/8	1 1/8	26-2470	26-2480JR
9/16	1 3/8	1 1/8	26-2480	26-2480JR
1/2	2	1 1/2	26-1330	26-1330JR
5/8	2	1 1/2	26-1340	26-1340JR
7/8	2	1 1/2	26-1165	26-1165JR
1	2	1 1/2	26-1370	26-1370JR
1 3/8	3	2 1/2	26-0114	26-0114JR
1 1/2	3	2 1/2	26-0015	26-0015JR



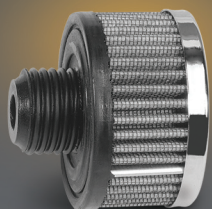
Shielded Clamp-On Crankcase Vent Filters			
Flange ID	Chrome Top Filter Diameter	Filter Height	Part Number
1	3	2 1/2	26-1511
1 3/8	3	2 1/2	26-1513
1 1/2	3	2 1/2	26-1514
1 3/4	3	2 1/2	26-1515

Push-in Vent Filter works for all valve covers that have a 1 1/4" hole.



Push-In Crankcase Vent Filters				
Valve Hole	Chrome Top Filter Diameter	Filter Height	Part Number	Description
1 1/4	3	2 1/2	26-1516	w/ Shield
1 1/4	3	2 1/2	26-1490	w/o Shield
1 1/4	3	1 3/4	26-1491	w/o Shield

This breather will screw directly into the threaded valve covers on Ford vehicles.



Screw-In Breathers for Late Mustangs			
Filter Diameter	Filter Height	Part Number	Comments
3	2 - 1/2	26-1522	No Shield
3	1 - 3/4	26-1524	Low Profile

CUSTOM ASSEMBLIES

A PERFECT COMBINATION OF LOOKS AND PERFORMANCE

S&B's custom chrome assemblies are designed and engineered with the racer in mind. They blur the line between good looks and superior air flow and deliver a product that performs with the looks that kill. S&B's custom chrome assemblies are designed for use with any engine that uses a round element air cleaner. They incorporate our washable, re-usable air filters and provide a greater amount air flow than other manufacturers assemblies. Available for most carbureted applications.

14" CUSTOM ASSEMBLIES WITH CHROME TOP

Part Number	Description	Top Part Number	Base Part Number	Filter Part Number	Total Height of Assembly
79-7100	Custom Assy 14", 9/16" Std Base 5-1/8 Flg, Chrome Top, 14" OD x 11.7" ID x 2" H	79-9462	79-9463	W-7100	3.625"
79-7102	Custom Assy 14", 9/16" Std Base 5-1/8 Flg, Chrome Top, 14" OD x 11.7" ID x 3" H	79-9462	79-9463	W-7102	4.625"
79-7103	Custom Assy 14", 9/16" Std Base 5-1/8 Flg, Chrome Top, 14" OD x 11.7" ID x 4" H	79-9462	79-9463	W-7103	5.625"
79-7106	Custom Assy 14", 9/16" Std Base 5-1/8 Flg, Chrome Top, 14" OD x 11.7" ID x 5" H	79-9462	79-9463	W-7106	6.625"
79-7107	Custom Assy 14", 9/16" Std Base 5-1/8 Flg, Chrome Top, 14" OD x 11.7" ID x 6" H	79-9462	79-9463	W-7107	7.625"
79-9458	Custom Assy 14", 1-1/4" Drop Base 5-1/8 Flg, Chrome Top, 14" OD x 11.7" ID x 2" H	79-9462	79-9464	W-7100	1.75"
79-9457	Custom Assy 14", 1-1/4" Drop Base 5-1/8 Flg, Chrome Top, 14" OD x 11.7" ID x 3" H	79-9462	79-9464	W-7102	2.75"
79-9456	Custom Assy 14", 1-1/4" Drop Base 5-1/8 Flg, Chrome Top, 14" OD x 11.7" ID x 4" H	79-9462	79-9464	W-7103	3.75"
79-9454	Custom Assy 14", 1-1/4" Drop Base 5-1/8 Flg, Chrome Top, 14" OD x 11.7" ID x 5" H	79-9462	79-9464	W-7106	4.75"
79-9455	Custom Assy 14", 1-1/4" Drop Base 5-1/8 Flg, Chrome Top, 14" OD x 11.7" ID x 6" H	79-9462	79-9464	W-7107	5.75"

A complete application listing available online at:
www.sbfilters.com

Since we are constantly engineering our products please visit us online for the most recent applications and sizes.



STANDARD BASE

Part Number 79-9463

Custom Assembly Base
9/16" Std Base – 5-1/8" Flange



DROPPED BASE

Part Number 79-9464

Custom Assembly Base
1-1/2" Drop Base – 5-1/8" Flange

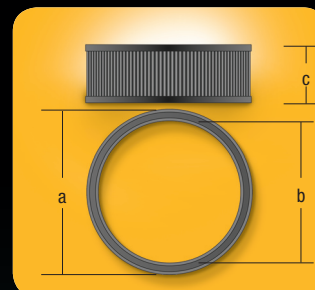


+ ROUND OPEN WASHABLE COTTON GAUZE ELEMENT APPLICATION GUIDE

A: Outside Diameter of Filter: Measure filter, on a flat surface, from outside edge to outside edge.

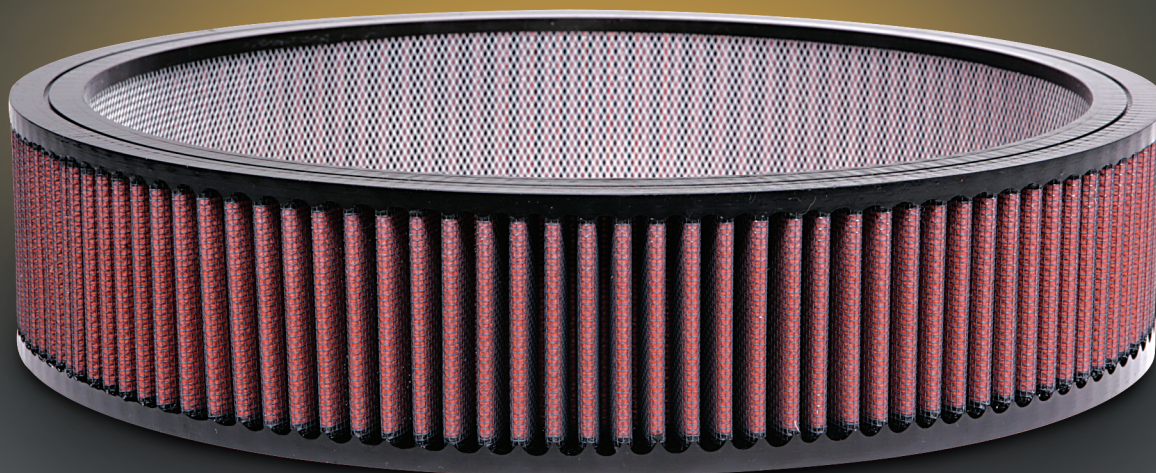
B: Inside Diameter of Filter Inside diameter if filter can stretch up to 1/16"

C: Height of Filter: The height of the filter



(A)			(B)		(C)		
Part Number		Round OD		Round ID		Round Height	
Part Number:	Inched	MM	Inches	MM	Inches	MM	
W-7104	4.00	102	2.70	69	2.00	51	
W-7135	4.00	102	2.70	69	3.00	76	
W-7136	4.00	102	2.70	69	4.00	102	
W-7137	4.00	102	2.70	69	5.00	127	
W-7138	4.00	102	2.70	69	6.00	152	
W-7108	6.375	162	5.00	127	2.50	64	
W-7112	6.375	162	5.00	127	1.50	38	
W-7130	6.375	162	5.00	127	3.00	76	
W-7131	6.375	162	5.00	127	4.00	102	
W-7132	6.375	162	5.00	127	5.00	127	
W-7133	6.375	162	5.00	127	6.00	152	
W-7134	6.375	162	5.00	127	2.00	51	
W-7115	9.00	229	7.70	196	2.00	51	
W-7116	9.00	229	7.70	196	3.50	89	
W-7139	9.00	229	7.70	196	3.00	76	
W-7140	9.00	229	7.70	196	4.00	102	
W-7141	9.00	229	7.70	196	5.00	127	
W-7142	9.00	229	7.70	196	6.00	152	
W-7118	10.00	254	8.00	203	2.00	51	
W-7143	10.00	254	8.00	203	3.00	76	

(A)			(B)		(C)	
Part Number	Round OD		Round ID		Round Height	
Part Number:	Inched	MM	Inches	MM	Inches	MM
W-7144	10.00	254	8.00	203	4.00	102
W-7145	10.00	254	8.00	203	5.00	127
W-7146	10.00	254	8.00	203	6.00	152
W-7052	11.00	279	8.90	226	2.00	51
W-7053	11.00	279	8.90	226	3.00	76
W-7054	11.00	279	8.90	226	4.00	102
W-7055	11.00	279	8.90	226	5.00	127
W-7056	11.00	279	8.90	226	6.00	152
W-7101	13.50	343	11.20	284	2.625	67
W-7147	13.50	343	11.20	284	3.00	76
W-7148	13.50	343	11.20	284	4.00	102
W-7149	13.50	343	11.20	284	5.00	127
W-7150	13.50	343	11.20	284	6.00	152
W-7151	13.50	343	11.20	284	2.00	51
W-7100	14.00	356	11.70	297	2.00	51
W-7102	14.00	356	11.70	297	3.00	76
W-7103	14.00	356	11.70	297	4.00	102
W-7106	14.00	356	11.70	297	5.00	127
W-7107	14.00	356	11.70	297	6.00	152



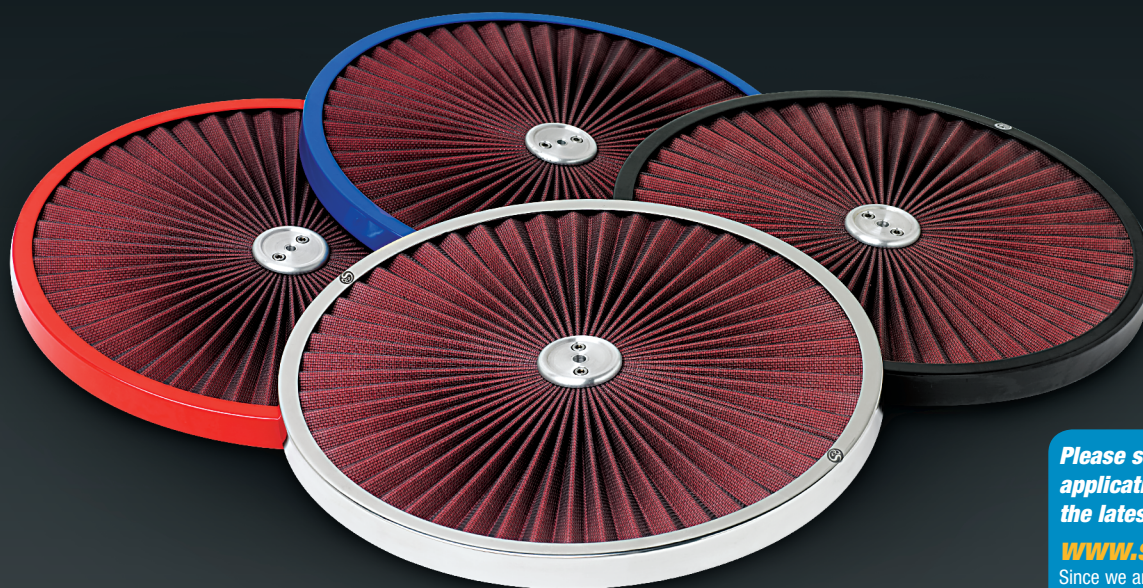
ULTIMA™ FILTER TOP

ENGINEERED TO INCREASE AIR FLOW TO THE ENGINE

S&B has given you the performance boost you've been looking for with the Ultima Air Flow Top. Not only does the Ultima increase the filter area, it is engineered to redirect airflow inside the filter to pull in more air through the side pleats for increased performance results. Cleanable and reusable, the Ultima Air Flow Top filter provides the greatest protection available for your engine, and comes in a wide range of applications. Sizes include 11- and 14-inch diameters and are available in powder coated black, red, blue and polished stainless-steel aluminum trim ring.

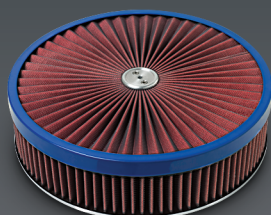
Features and Benefits

- Increases the amount of air filter surface area for greater performance
- Technically advanced construction withstands temperature extremes for extended air filter life
- Our industry leading pleat depth allows for improved airflow, better filtration and top level protection
- Elimination of "bleed" increases the amount of available surface area which improves air flow and increases efficiencies
- S&B's washable, reusable cotton gauze media comes with a 1,000,000 mile limited warranty



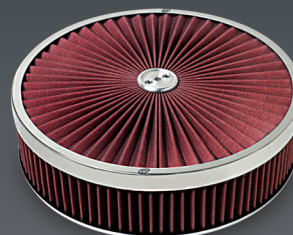
Please see page 21 for current applications. You can also find the latest applications online at: www.sbfilters.com.

Since we are constantly engineering our products please visit us online for the most recent applications and sizes.



11" ASSEMBLY

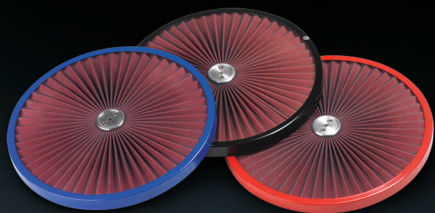
Includes:
9/16" Std Base – 5-1/8" Flange
11" O.D. High Performance Filter
11" O.D. Ultima Top with Powder Coated Blue Rim



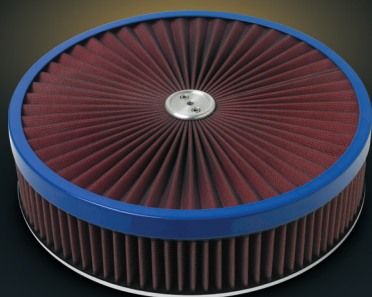
14" ASSEMBLY

Includes:
9/16" Std Base – 5-1/8" Flange
14" O.D. High Performance Filter
14" O.D. Ultima Top with Polished Stainless Steel Rim

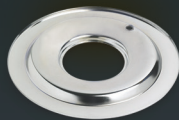
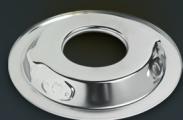
+ ULTIMA™ FILTER TOP & CUSTOM ASSEMBLY APPLICATION GUIDE



Ultima - High Flow Top (Top Only)				
Part Number	Description	Diameter	Color	
78-1409	High Flow Top	11	Black	
78-1410	High Flow Top	11	Blue	
78-1411	High Flow Top	11	Red	
78-1100-SS	High Flow Top	11	Stainless Steel	
78-1400-PC	High Flow Top	14	Black	
78-1407	High Flow Top	14	Blue	
78-1408	High Flow Top	14	Red	
78-1400-SS	High Flow Top	14	Stainless Steel	

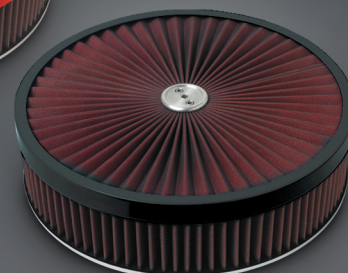
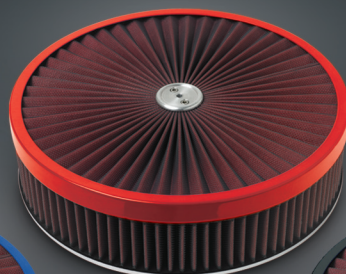
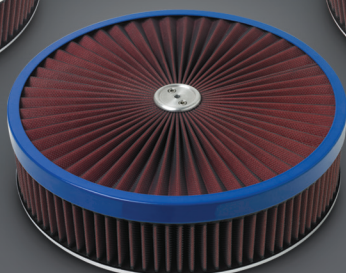
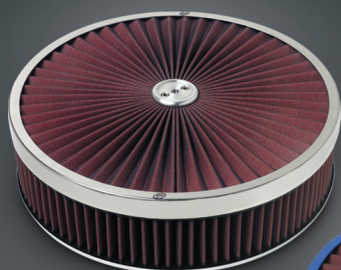


14" Custom Assemblies with Ultima - High Flow Top					
Part Number	Neck Flange	Filter Height	Total Height	Color	Filter Only
STANDARD 9/16" RAISED BASE					
78-1402-S-PC	5-1/8	2	3-5/8	Black	W-7100
78-1402-S-SS	5-1/8	2	3-5/8	Stainless	W-7100
78-1429	5-1/8	2	3-5/8	Blue	W-7100
78-1430	5-1/8	2	3-5/8	Red	W-7100
78-1403-S-PC	5-1/8	3	4-5/8	Black	W-7102
78-1403-S-SS	5-1/8	3	4-5/8	Stainless	W-7102
78-1433	5-1/8	3	4-5/8	Blue	W-7102
78-1434	5-1/8	3	4-5/8	Red	W-7102
78-1404-S-PC	5-1/8	4	5-5/8	Black	W-7103
78-1404-S-SS	5-1/8	4	5-5/8	Stainless	W-7103
78-1437	5-1/8	4	5-5/8	Blue	W-7103
78-1438	5-1/8	4	5-5/8	Red	W-7103
78-1405-S-PC	5-1/8	5	6-5/8	Black	W-7106
78-1405-S-SS	5-1/8	5	6-5/8	Stainless	W-7106
78-1441	5-1/8	5	6-5/8	Blue	W-7106
78-1442	5-1/8	5	6-5/8	Red	W-7106
78-1406-S-PC	5-1/8	6	7-5/8	Black	W-7107
78-1406-S-SS	5-1/8	6	7-5/8	Stainless	W-7107
78-1445	5-1/8	6	7-5/8	Blue	W-7107
78-1446	5-1/8	6	7-5/8	Red	W-7107
1-1/4" DROP BASE					
78-1427	5-1/8	2	1-3/4	Blue	W-7100
78-1428	5-1/8	2	1-3/4	Red	W-7100
78-1402-D-PC	5-1/8	2	1-3/4	Black	W-7100
78-1402-D-SS	5-1/8	2	1-3/4	Stainless	W-7100
78-1431	5-1/8	3	2-3/4	Blue	W-7102
78-1432	5-1/8	3	2-3/4	Red	W-7102
78-1403-D-PC	5-1/8	3	2-3/4	Black	W-7102
78-1403-D-SS	5-1/8	3	2-3/4	Stainless	W-7102
78-1435	5-1/8	4	3-3/4	Blue	W-7103
78-1436	5-1/8	4	3-3/4	Red	W-7103
78-1404-D-PC	5-1/8	4	3-3/4	Black	W-7103
78-1404-D-SS	5-1/8	4	3-3/4	Stainless	W-7103
78-1439	5-1/8	5	4-3/4	Blue	W-7106
78-1440	5-1/8	5	4-3/4	Red	W-7106
78-1405-D-PC	5-1/8	5	4-3/4	Black	W-7106
78-1405-D-SS	5-1/8	5	4-3/4	Stainless	W-7106
78-1443	5-1/8	6	5-3/4	Blue	W-7107
78-1444	5-1/8	6	5-3/4	Red	W-7107
78-1406-D-PC	5-1/8	6	5-3/4	Black	W-7107
78-1406-D-SS	5-1/8	6	5-3/4	Stainless	W-7107



STANDARD BASE
Part Number 79-9463
Custom Assembly Base
9/16" Std Base - 5-1/8" Flange

DROPPED BASE
Part Number 79-9464
Custom Assembly Base
1-1/2" Drop Base - 5-1/8" Flange



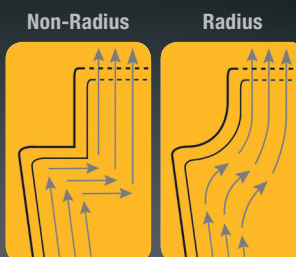
FILTERS THAT ARE TESTED NOT ONLY TO OUR HIGH STANDARDS, BUT THE STANDARDS OF THE BAJA 1000.

+ UNIVERSAL, POWER STACK & HIGH PERFORMANCE FILTERS

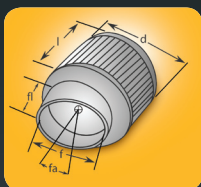
With the introduction of the Power Stack (inverted) design years ago, S&B revolutionized the filter industry. First, the Power Stack filter utilizes a unique inverted design to maximize air flow and filtration by substantially increasing the surface area of the filter. Second, the base of the filter incorporates S&B's patented radius design (AAF) for smoother, uninterrupted air flow. The inverted top and patented base design, allows the Power Stack to provide better filtration and air flow than filters of similar size. The Power Stack is available in black, blue, red powder coat and polished stainless steel.

Features and Benefits

- High Air Flow with Excellent Filtration
- Designed to Increase Horsepower and Acceleration
- Washable and Reusable
- Available in radius and non-radius designs



S&B's patented design funnels greater air flow to your engine, using a smooth radius flange.



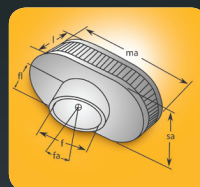
ROUND STRAIGHT



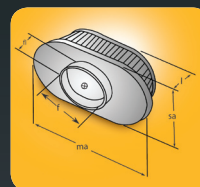
ROUND TAPERED



DUAL FLANGE OVAL



OVAL STRAIGHT



OVAL TAPERED



ROUND OPEN GAUZE FILTER

If you don't see it, you can build it. S&B revolutionizes the the performance market again - go online and build your own filter. Filters that are as custom as you need them to be!

S&B realizes that enthusiasts are constantly making modifications to their engines, and the air intake is no exception. Whether it is a custom air box designed by a racer, or you've done a build-up and have hood clearance issues, S&B has designed a program to get you the custom performance air filter you need. Navigate to the S&B website and click on the "Build Your Own Filter" icon on the website. Select the style of filter you need and select your measurements You can even select custom engraving for your new design. Once you have built your filter, you can submit your design. It is that simple.



+ ROUND STRAIGHT APPLICATION GUIDE

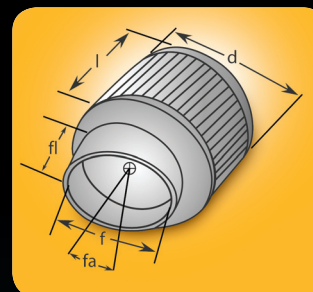
F: Inside Diameter for Mounting Flange: This dimension is critical for the mounting of your applications's air intake connection. Please note that the flange will stretch approximately 1/16 inches if necessary.

D: Diameter of Filter: This describes the outer dimension of the filter.

L: Length of Filter: This is the length of the filter element. Note that this does not include the length of the flange.

FL: Length of Flange: This is the length of the flange itself and can be angled if required. (see FA)

FA: Angle of Flange: This is listed in degrees and can provide added flexibility for those hard to fit applications.



(F)		(D)		(L)		(FA)		End Cap Options	
Inside Diameter Mounting Flange		Filter Width		Filter Height		Style of Flange		Rubber	Chrome
Inch	MM	Inch	MM	Inch	MM	Type	Angle	Rubber Part Number	Chrome Part Number
1 - 1/16	27	3	76	3	76	Centered	-	JR-104	RC-104
1 - 1/4	32	3	76	3	76	Centered	-	JR-66	RC-66
1 - 1/4	32	3	76	4	102	Centered	-	JR-7	RC-7
1 - 1/4	32	3	76	5	127	Centered	-	JR-8	RC-8
1 - 3/8	35	3	76	2 - 1/2	63	Centered		JR-114	RC-114
1 - 1/2	38	3	76	2 - 1/2	63	Centered		JR-15	RC-15
1 - 1/2	38	3	76	4	102	Centered		JR-16	RC-16
1 - 9/16	40	3	76	2	51	Centered		JR-84	RC-84
1 - 9/16	40	3	76	2 - 1/2	63	Centered		JR-16	RC-16
1 - 9/16	40	3	76	3	76	Centered		JR-87	RC-87
1 - 9/16	40	3 - 1/2	89	1 - 1/2	38	Centered		JR-17	RC-17
1 - 11/16	43	3	76	2 - 1/2	63	Centered		JR-113	RC-113
1 - 11/16	43	3	76	3	76	Centered		JR-112	RC-112
1 - 11/16	43	3	76	4	102	Centered		JR-20	RC-20
1 - 11/16	43	3	76	5	127	Centered		JR-21	RC-21
1 - 11/16	43	3 - 1/4	89	2	51	Centered		JR-19	RC-19
1 - 11/16	43	4	102	2	51	Centered		JR-26	
1 - 3/4	44	3	76	2 - 1/2	64	Centered		JR-14	RC-14
1 - 3/4	44	3 - 1/2	89	5	127	Centered		JR-36	RC-36
1 - 3/4	44	4 - 1/2	114	1 - 1/2	38	Centered		JR-34	RC-34
1 - 3/4	44	4 - 1/2	114	2	51	Centered		JR-37	RC-37
1 - 15/16	46	3	76	3	76	Centered		JR-89	RC-89
1 - 7/8	48	3	76	4	102	Centered		JR-40	RC-40
1 - 7/8	48	3	76	5	127	Centered		JR-41	RC-41
1 - 7/8	48	3	76	6	152	Centered		JR-42	RC-42
2 - 1/16	52	3	76	2 - 1/2	63	Centered		JR-188	RC-188
2 - 1/16	52	3	76	3	76	Centered		JR-189	RC-189
2 - 1/16	52	3 - 1/4	83	4	102	Centered		JR-135	RC-135
2 - 1/16	52	3 - 1/2	89	4	102	Centered		JR-50	RC-50
2 - 1/16	52	3 - 1/2	89	5	127	Centered		JR-51	RC-51
2 - 1/16	52	3 - 1/2	89	6	152	Centered		JR-52	RC-52
2 - 1/4	57	3 - 1/2	89	2	51	Centered		JR-190	RC-190
2 - 1/4	57	3 - 1/2	89	4	102	Centered		JR-60	RC-60
2 - 1/4	57	3 - 1/2	89	5	127	Centered		JR-61	RC-61
2 - 1/4	57	3 - 1/2	89	6	152	Centered		JR-62	RC-62
2 - 1/4	57	4 - 1/2	114	4	102	Centered		JR-63	RC-63
2 - 1/4	57	4 - 1/2	114	5	127	Centered		JR-64	RC-64
2 - 7/16	62	3 - 1/2	89	4	102	Centered		JR-80	RC-80
2 - 7/16	62	3 - 1/2	89	5	127	Centered		JR-81	RC-81
2 - 7/16	62	3 - 1/2	89	6	152	Centered		JR-82	RC-82
2 - 7/16	62	3 - 1/2	89	4	102	Angled	20 X 1" LG	JR-175	RC-175
2 - 7/16	62	3 - 1/2	89	5	127	Angled	20 X 1" LG	JR-176	RC-176
2 - 7/16	62	3 - 1/2	89	6	152	Angled	20 X 1" LG	JR-177	RC-177
2 - 7/16	62	4 - 1/2	114	4	102	Centered		JR-83	RC-83
2 - 7/16	62	4 - 1/2	114	5	127	Centered		JR-84	RC-84
2 - 7/16	62	5	127	2	51	Centered		JR-85	RC-85
2 - 7/16	62	5	127	3	76	Centered		JR-86	RC-86
2 - 3/4	70	4	102	5	127	Angled	10	JR-146	
2 - 3/4	70	4	102	6	152	Angled	10	JR-147	
2 - 3/4	70	4	102	7	178	Angled	10	JR-148	
2 - 3/4	70	4 - 1/2	114	4	102	Centered		JR-90	
2 - 3/4	70	4 - 1/2	114	5	127	Centered		JR-91	
2 - 3/4	70	5	127	2	51	Centered		JR-92	RC-92
2 - 3/4	70	5	127	3	76	Centered		JR-93	RC-93
2 - 7/8	73	4	102	6	152	Centered		JR-162	

+ ROUND TAPERED APPLICATION GUIDE

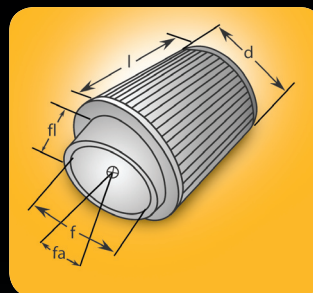
F: Inside Diameter for Mounting Flange: This dimension is critical for the mounting of your applications's air intake connection. Please note that the flange will stretch approximately 1/16 inches if necessary.

D: Diameter of Filter: This describes the outer dimension of the filter.

L: Length of Filter: This is the length of the filter element. Note that this does not include the length of the flange.

FL: Length of Flange: This is the length of the flange itself and can be angled if required. (see FA)

FA: Angle of Flange: This is listed in degrees and can provide added flexibility for those hard to fit applications.



(F)		(D)		(D)		(L)		(FA)		End Cap Options	
Inside Diameter Mounting Flange		Filter Base Width		Filter Top Width		Filter Height		Style of Flange		Rubber	Chrome
Inch	MM	Inch	MM	Inch	MM	Inch	MM	Type	Angle	Rubber Part Number	Chrome Part Number
1 - 3/8	35	2 - 1/4	51	2	63	2 - 1/4	57.5	Centered		JR-79	RC-79
1 - 9/16	40	3	51	2	76	3	76	Centered		JR-231	RC-231
1 - 11/16	43	3	51	2	76	2 - 3/4	70	Centered		JR-107	RC-107
1 - 13/16	46	3	51	2	76	3	76	Centered		JR-232	RC-232
1 - 7/8	48	3	51	2	76	3	76	Centered		JR-109	RC-109
1 - 15/16	49	3	51	2	76	3	76	Centered		JR-106	RC-106
2 - 1/8	52.5	3 - 1/2	51	2	89	4	102	Centered		JR-120	RC-120
2 - 1/8	55	3 - 1/2	51	2	89	3	76	Centered		JR-233	RC-233
2 - 1/8	55	3 - 1/2	51	2	89	2 - 3/4	70	Centered		JR-234	RC-234
2 - 1/4	57	3 - 1/2	51	2	89	4	102	Centered		JR-125	RC-125

* DUAL FLANGE OVAL APPLICATION GUIDE

F: Inside Diameter for Mounting Flange: This dimension is critical for the mounting of your applications's air intake connection. Please note that the flange will stretch approximately 1/16 inches if necessary.

D: Diameter of Filter: This describes the outer dimension of the filter.

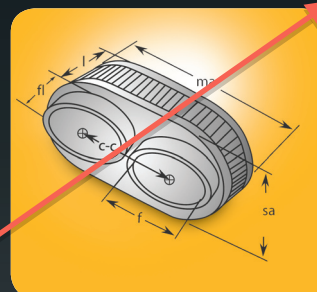
L: Length of Filter: This is the length of the filter element. Note that this does not include the length of the flange.

FL: Length of Flange: This is the length of the flange itself and can be angled if required. (see FA)

MA: Length of Filter: This dimension is the outer dimension of filter. For those filters that taper, this dimension should be described with the MA = base x top of filter. For example: MA = 4"x3" the base of the filter is side closest to the flange.

SA: Width of Filter: This dimension is the outer dimension of filter. For those filters that taper, this dimension should be described with the SA = base x top of filter. For example: SA = 3"x2" the base of the filter is the closest to the flange.

CC: Center to Center of Dual Flange Ovals - This dimension will provide the spacing of the flanges on a dual flange filter.



(F)		(MA)		(SA)		(MA)		(SA)		(L)	(FL)	(FA)	(FO)	(CC)	End Cap Options		
Inside Diameter Part Number		Filter Base		Filter Base		Filter Top		Filter Top		Filter Height		Flange	Flange	Flange	Flange:	Rubber	
Inch	MM	Inch	MM	Inch	MM	Inch	MM	Inch	MM	Inch	MM	Type	MM	Inch	MM	Rubber Part Number	
1 - 9/16	40	4 - 1/2	114	7	178					2	51	5/8	16	Centered	3	76	JR-2240
2	51	4	102	6 - 1/4	159					2	51	5/8	16	Offset Vertical	1/4	6	JR-2370
2	51	4	102	6 - 1/4	159					2 - 1/4	82	5/8	16	Offset Vertical	1/4	6	JR-4350
2 - 1/16	52	3 - 3/4	95	6 - 1/4	159					3	76	5/8	16	Centered			JR-2300
2 - 1/16	52	3 - 3/4	95	8 - 1/2	216					3 - 3/4	44	5/8	16	Centered			JR-3240
2 - 1/16	52	3 - 3/4	95	8 - 1/2	216					2 - 3/8	60	5/8	16	Centered			JR-2720
2 - 1/16	52	3 - 3/4	95	8 - 1/2	216					2 - 3/8	60	5/8	16	Centered			JR-2820
2 - 1/8	54	4	102	6	152	3 - 3/4	95	4 - 1/2	114	4	102	5/8	16	Centered			JR-2850
2 - 1/8	54	4	102	6 - 1/4	159					3 - 3/4	44	5/8	16	Centered			JR-2380
2 - 1/8	54	4	102	6 - 1/4	159					2	51	3/4	19	Centered			JR-2360
2 - 1/8	54	4	102	6 - 1/4	159					2 - 1/2	63	3/8	10	Centered			JR-4240
2 - 1/8	54	4	102	6 - 1/4	159					3	76	3/8	10	Centered			JR-3510
2 - 3/8	60	3 - 5/8	92	7 - 3/8	187					3	76	5/8	16	Centered			JR-2970
2 - 3/8	60	3 - 3/4	95	6 - 1/4	159					3	76	3/8	10	Centered			JR-2920
2 - 3/8	60	3 - 3/4	95	6 - 1/4	159					5	127	3/8	10	Centered			JR-4720
2 - 3/8	60	3 - 3/4	95	6 - 1/4	159					6 - 3/4	171	3/8	10	Centered			JR-4710
2 - 3/4	70	5 - 1/2	140	9	228					2	51	3/4	19	Centered			JR-2830
2 - 3/4	70	5 - 1/2	140	9	228					5 - 1/2	63	3/4	19	Centered			JR-2840
3 - 1/8	79	5	127	8 - 3/4	222	4	102	6 - 1/4	159	3	76	5/8	16	Centered			JR-1012

+ OVAL STRAIGHT APPLICATION GUIDE

F: Inside Diameter for Mounting Flange: This dimension is critical for the mounting of your applications's air intake connection. Please note that the flange will stretch approximately 1/16 inches if necessary.

D: Diameter of Filter: This describes the outer dimension of the filter.

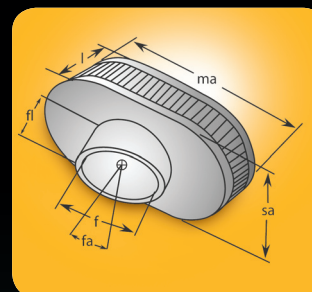
L: Length of Filter: This is the length of the filter element. Note that this does not include the length of the flange.

FL: Length of Flange: This is the length of the flange itself and can be angled if required. (see FA)

FA: Angle of Flange: This is listed in degrees and can provide added flexibility for those hard to fit applications.

MA: Length of Filter: This dimension is the outer dimension of filter. For those filters that taper, this dimension should be described with the MA = base x top of filter. For example: MA = 4"x3" the base of the filter is side closest to the flange.

SA: Width of Filter: This dimension is the outer dimension of filter. For those filters that taper, this dimension should be described with the SA = base x top of filter. For example: SA = 3"x2" the base of the filter is the closest to the flange.



(F)		(MA)		(SA)		(L)		(FL)		(FA)		(FO)		End Cap Options
Inside Diameter		Filter Width		Filter Width		Filter Height		Flange Height		Flange Style		Flange Offset		Rubber Part Number
Inch	MM	Inch	MM	Inch	MM	Inch	MM	Type	MM	Type	Angle/Degree	Inch	MM	Part Number
1 - 1/4	32	3 - 7/16	87	3 - 7/8	98	2 - 1/4	57	1/2	13	Centered				JR-3410
1 - 1/2	38	3 - 7/16	87	3 - 7/8	98	2 - 1/4	57	7/16	11	Centered				JR-3450
1 - 1/2	38	3 - 3/4	95	4 - 1/2	114	2 - 3/4	70	1	25	Angled	30			JR-0640
1 - 15/16	49	3 - 7/16	87	3 - 7/8	98	2 - 1/4	57	1/2	13	Centered				JR-3460
2 - 1/16	52	4 - 1/2	114	7	178	1 - 1/2	38	7/8	22	Offset Vertical		1/2	13	JR-0700
2 - 1/16	52	4 - 1/2	114	7	178	2	51	7/8	22	Offset Vertical & To Right	1/2	13		JR-0710
2 - 1/16	52	4 - 1/2	114	7	178	3	76	7/8	22	Offset Vertical & To Right	1/2	13		JR-0720
2 - 1/4	57	3 - 3/4	95	4 - 1/2	114	4	102	5/8	16	Centered				JR-0990
2 - 1/4	57	3 - 3/4	95	4 - 1/2	114	5	127	5/8	16	Centered				JR-1100
2 - 1/4	57	3 - 3/4	95	4 - 1/2	114	5	127	1	25	Angled	10			JR-1140
2 - 1/4	57	3 - 3/4	95	4 - 1/2	114	6	152	1	25	Angled	10			JR-1150
2 - 1/4	57	4	102	6 - 1/4	159	4 - 1/2	114	1	25	Angled	10			JR-1320
2 - 1/4	57	4	102	6 - 1/2	159	6	152	1	25	Angled	10			JR-1330
2 - 7/16	62	3 - 1/2	89	4 - 1/2	114	7	178	5/8	16	Centered				JR-1810
2 - 7/16	62	3 - 3/4	95	4 - 1/2	114	3	76	5/8	16	Centered				JR-3780
2 - 7/16	62	3 - 3/4	95	4 - 1/2	114	5	127	5/8	16	Centered				JR-1180
2 - 7/16	62	3 - 3/4	95	4 - 1/2	114	5	127	1	25	Angled	10			JR-1220
2 - 7/16	62	3 - 3/4	95	4 - 1/2	114	5	127	1 - 1/4	32	Angled	20			JR-1370
2 - 7/16	62	3 - 3/4	95	4 - 1/2	114	6	152	1	25	Angled	10			JR-1230
2 - 7/16	62	3 - 3/4	95	4 - 1/2	114	6	152	1 - 1/4	32	Angled	20			JR-1380
2 - 7/16	62	3 - 3/4	95	4 - 1/2	114	7	178	1	25	Angled	10			JR-1240
2 - 7/16	62	3 - 3/4	95	4 - 1/2	114	7	178	1 - 1/4	32	Angled	20			JR-1390
2 - 7/16	62	3 - 3/4	95	4 - 1/2	114	9	228	1	25	Angled	10			JR-1260
2 - 7/16	62	4	102	6 - 1/4	159	4 - 1/2	114	1	25	Angled	10			JR-1340
2 - 7/16	62	4	102	6 - 1/4	159	5	127	1	25	Angled	10			JR-1350
2 - 7/16	62	4	102	6 - 1/4	159	6	152	1	25	Angled	10			JR-1360
2 - 7/16	62	4 - 1/2	114	7	178	2	51	5/8	16	Centered				JR-1980
2 - 1/2	63	3 - 3/4	95	4 - 1/2	114	7	178	2 - 1/8	54	Angled	10			JR-1830
2 - 1/2	63	3 - 3/4	95	4 - 1/2	114	9	228	2 - 1/8	54	Angled	10			JR-1840
2 - 9/16	65	4 - 1/2	114	7	178	1 - 1/2	38	7/8	22	Offset Vertical		2 - 1/8	54	JR-0750
2 - 9/16	65	4 - 1/2	114	7	178	2	51	7/8	22	Offset Vertical		2 - 1/8	54	JR-0760
2 - 9/16	65	4 - 1/2	114	7	178	3	76	7/8	22	Offset Vertical		2 - 1/8	54	JR-0770
2 - 3/4	70	4	102	6 - 1/4	159	5	127	5/8	16	Centered				JR-1500
2 - 3/4	70	4	102	6 - 1/4	159	5	127	1	25	Angled	10			JR-1530
2 - 3/4	70	4	102	6 - 1/4	159	6	152	1	25	Angled	10			JR-1540
2 - 3/4	70	4	102	6 - 1/4	159	7	178	5/8	16	Centered				JR-1520
2 - 3/4	70	4	102	6 - 1/4	159	7	178	1	25	Angled	10			JR-1550
2 - 3/4	70	4 - 1/2	114	7	178	2	51	5/8	16	Centered				JR-2000
2 - 3/4	70	4 - 1/2	114	7	178	3	76	5/8	16	Centered				JR-2860
3 - 3/16	81	4 - 1/2	114	6 - 1/4	159	11 - 3/8	289	3/4	19	Centered				JR-1011
3 - 1/2	89	4 - 1/2	114	7	178	3 - 1/2	89	5/8	16	Centered				JR-3180
3 - 1/2	89	4 - 1/2	114	7	178	7	178	5/8	16	Centered				JR-3620
6	152	6 - 1/2	159	8 - 1/4	209	3 - 1/4	82	1	25	Centered				JR-1002